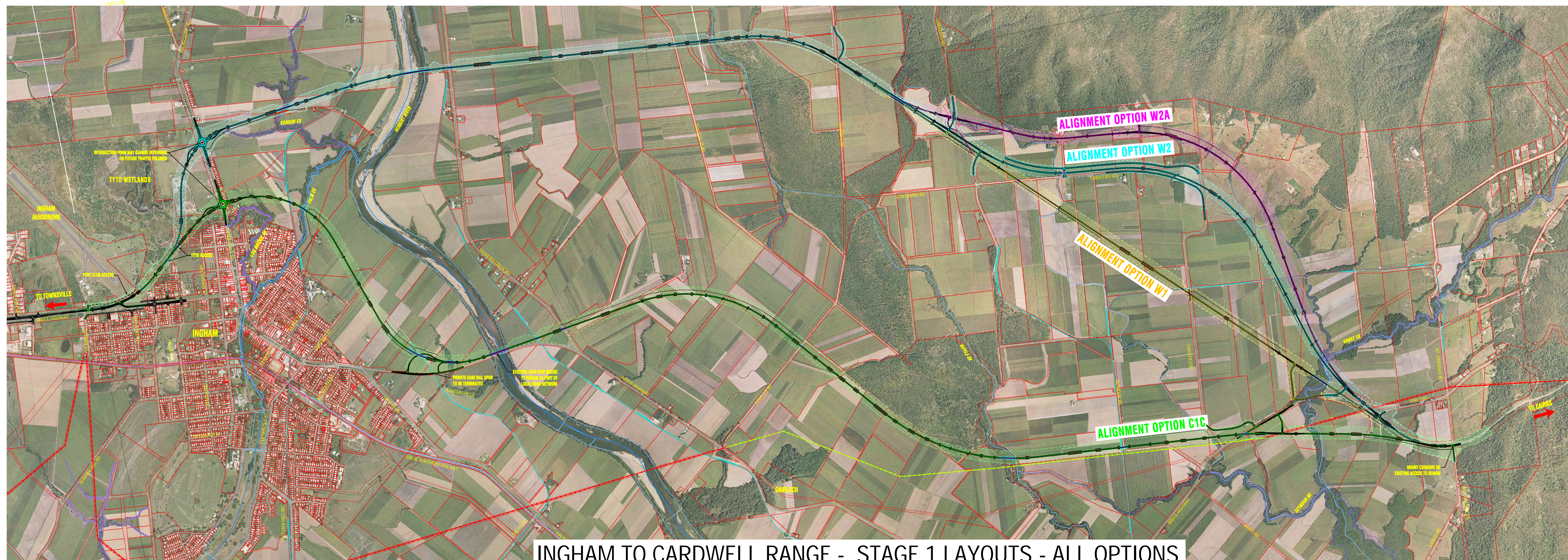


AutoCAD No. 60050957_PS_PW_SK108.dwg



INGHAM TO CARDWELL RANGE - STAGE 1 LAYOUTS - ALL OPTIONS



PRELIMINARY
NOT TO BE USED FOR
CONSTRUCTION PURPOSES

LEGEND

- DCDB PROPERTY BOUNDARY
- PROPERTY EASEMENT BOUNDARY
- CANE RAIL & SIDING
- POWERLINK FEEDER LINE - EXISTING
- POWERLINK FEEDER LINE - PROPOSED REALIGNMENT
- OPTIC FIBRE LINE
- CULVERT BANK
- ALIGNMENT OPTION MCW1
- ALIGNMENT OPTION MCW2
- ALIGNMENT OPTION MCW2A
- ALIGNMENT OPTION MCC1C
- NEW UNSEALED SERVICE ROAD
- BRIDGES
- CAUSEWAYS

0 100 200 300 400m
SCALE
1:10000