

MainRoads

Rutledge St. to Cardwell Range Highway Planning Study

Community Update No. 2

February 2009

In October 2008, the Department of Main Roads commissioned a planning study to develop options for reducing flooding closures on the Bruce Highway between Rutledge Street and the southern foothills of the Cardwell Range.

What are the study's objectives?

The study, which is anticipated to take up to three years to complete, is the first step towards improving the performance of the highway during the annual wet season. Main Roads will investigate options to upgrade the existing highway alignment as well as options to build on an alternative alignment.

Extensive community consultation will be undertaken to help identify and develop highway options in conjunction with flooding, engineering, environmental, economic, social and cultural heritage analysis.

Upon completion of the study, Main Roads will apply for funding to construct the preferred option. Once funding is secured, a construction date will be announced. There is no funding for the construction at this stage.

The primary aim of the study is to find the best option to improve the flood immunity of the Bruce Highway without significantly increasing flooding problems on nearby land. Main Roads is not attempting to "flood-proof" the highway, but rather reduce the frequency and duration of road closures caused by flooding.

The study will also look at improving the safety and quality of the Bruce Highway to accommodate for current and future traffic needs. Main Roads will plan for a 4-lane highway corridor, so an additional two lanes can be built in the future when traffic volumes increase. Initially, only two lanes will be required.



Southern foothills of the Cardwell Range taken after Cyclone Ellie

What has been happening?

Main Roads has been narrowing down the study area between Rutledge Street and the Cardwell Range by identifying any initial constraints to where the highway could run. This process has involved:

- Consultation with local stakeholders;
- Preliminary engineering, flooding, environmental and cultural heritage analysis.

In addition to this Main Roads and its consultants have:

- Updated the highway website at www.ebc.net.au/ingham to include an interactive map that allows users to identify their preferred route for the highway;
- Met with the Chamber of Commerce to gain feedback on the economic impact assessment proposal. Marsden Jacob Associates have been commissioned to undertake the assessment;
- Formed a Planning Advisory Committee (PAC), consisting of local residents, business owners and organisations, to help with the community consultation process. The open committee met for the second time on the 29th January 2009 to discuss how best to engage with the community to get them involved in developing options.

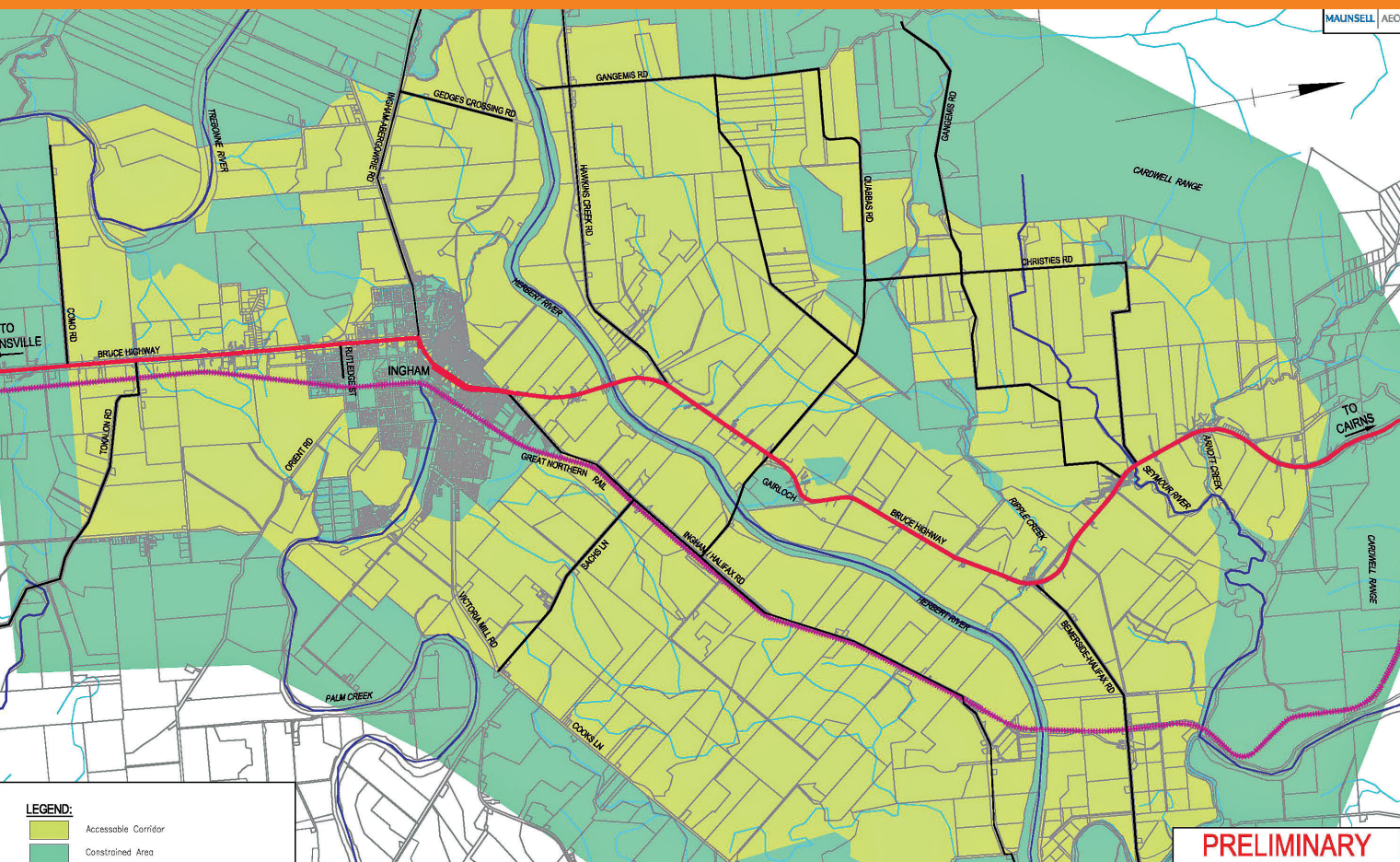
If you would like to help with the flooding analysis you can send pictures of recent flooding caused by Cyclone Ellie to: ingham@ebc.net.au or PO Box 2447, Townsville QLD 4810.



Australian Government



Queensland Government
Department of Main Roads



The identification of initial environmental, flooding and cultural heritage constraints has helped eliminate the dark green areas from further study. The refined study area is depicted in the light green encompassing the existing Bruce Highway (red line) and the railway line (purple line).

What is happening next?

The next step is to refine the study area into two “zones of interest”, in addition to the existing highway. Whilst this is occurring EBC (community engagement consultants) will be:

- Consulting with Ingham businesses to gather data for the social and economic impact assessments;
- Meeting with landholders who live or own property off the existing highway to help identify alignments and gather vital local knowledge.

Once the other two “zones of interest” have been identified, the landholders within these zones will be contacted by the EBC team. Consultation activities will also be broadened to include public displays to answer questions about the planning study, gather information from locals, and get ideas for potential alignments.

Want more information?

If you would like more information about the study or how to get involved you can contact the study team by:

Phone: 1300 139 824 (recorded message) Fax: (07) 4772 6335
Email: ingham@ebc.net.au Website: www.ebc.net.au
Post: PO Box 2447, Townsville QLD 4810
Background information on the study is also available at www.mainroads.qld.gov.au

Preferisci leggere in Italiano l'informazione sullo studio della pianificazione urbanistica da Rutledge Street a Cardwell Range? Per una traduzione in lingua Italiana degli ultimi aggiornamenti per la comunità, contatta il Team-Studio ai numeri sopra indicati.